

Coma Berenice is an outstanding, long lasting bright work varnish. Its deep, rich, high gloss finish is achieved without the need for complex mixing or multiple coats allowing even first time varnishers to achieve the highest possible standards of appearance on their bright work. Typically varnishes age and crack because they lose their flexibility. Coma Berenice is unique in its ability to maintain flexibility and even after extended periods in the sun and rain, it continues to adapt to the wood's expansion and contraction. Results – Coma Berenice offers high build, ultra high gloss, ultraviolet resistance and color stability like no other and a longevity of product life rivaled by none.

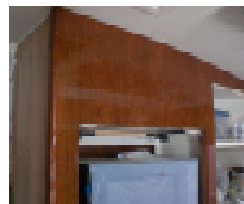
Containers: 1 Liter
Application: Brush, Roll Spray
Dry Times:
 Touch Dry: 5 hours @ 72F
 Hard Dry: 24-36 hours @ 72F
Coverage: 407 sq. ft. per gallon
Sanding: Wet sand after overnight dry



**Superb UV
Resistance**



Ultra High Gloss



**High Build, but
Remains Flexible**

HMG Performance Coatings
PO Box 313
Roebuck, SC 29376
T: 864-585-0266



Distributed By:
Providence Lacquer & Supply
1155 Park Ave.
Cranston, RI 02910
T:888-943-1700